

♩ = 108

Pattern A



Pattern B



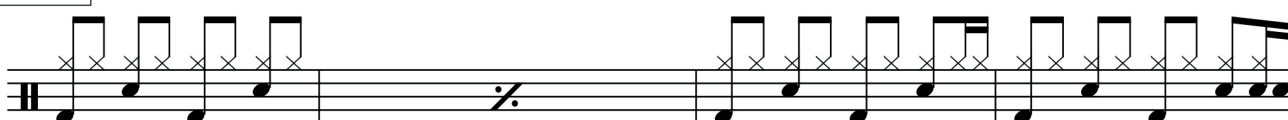
Pattern C



Pattern D



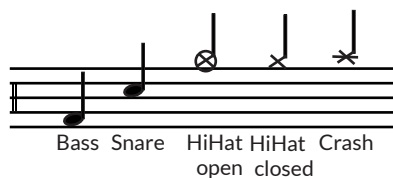
Pattern E



Pattern F



www.einfachschlagzeug.de





zum Song



zur Podcast Folge



weitere Infos und Material



www.einfachschlagzeug.de

A musical notation on a five-line staff representing a drum set pattern. The notes are: Bass (quarter note), Snare (quarter note), HiHat (quarter note with an 'x' above it), Crash (quarter note with an 'x' above it), Tom 1 (quarter note), Tom 2 (quarter note), Cross Stick (quarter note with an 'x' above it), and Ride (quarter note with a downward-pointing arrow above it).

Bass Snare HiHat Crash Tom 1 Tom 2 Cross Ride
Stick

